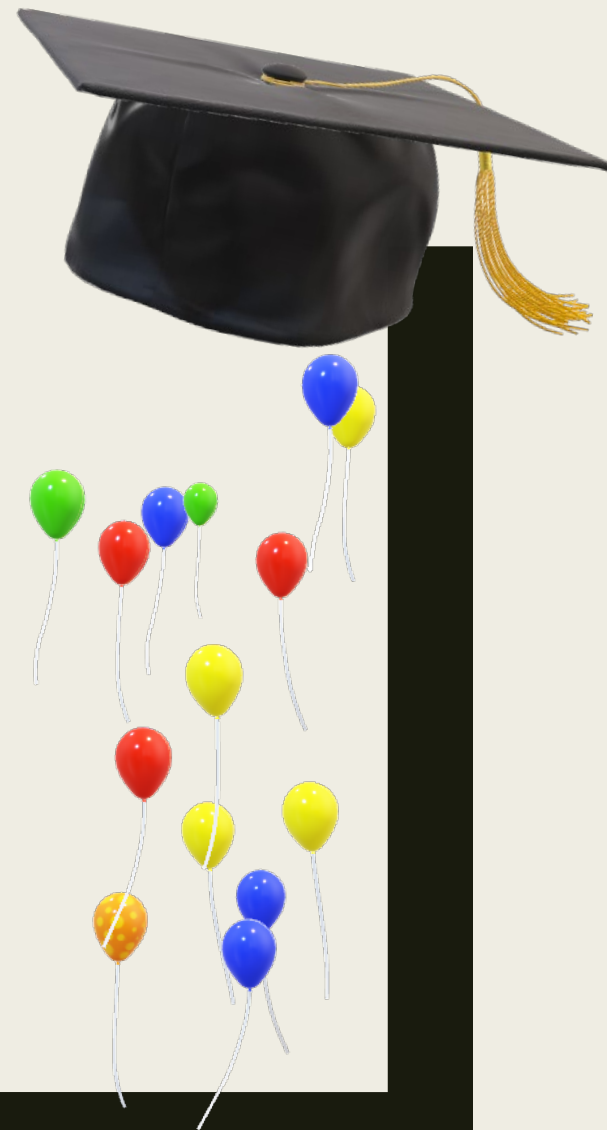


# WELCOME SENIORS

<https://youtu.be/cuoe4YXzXWQ>



# GRADUATION IS COMING!!!

Saturday June 8<sup>th</sup> at 2:30PM

19 school days away...



# AGENDA TODAY

Golden Ticket

Fines/Fees

Torch Passing Day

Cap & Gown

Senior Walks

Graduation Rehearsal

Senior Lunch

Graduation

Senior All Nighter

ALL SPHS Seniors earning a diploma and  
participating in Graduation **MUST**  
complete a Golden Ticket!!!

# Golden Ticket Explained (Senior Checkout Form)

Distributed May 29<sup>th</sup> in  
2<sup>nd</sup> period

# 2023-2024 SPHS Golden Ticket



# 2023 – 2024 Golden Ticket Directions

Student:

ID#:

1. ALL HIGHLIGHTED TEACHERS MUST SIGN INDICATING THAT ALL CLASS REQUIREMENTS HAVE BEEN MET

Current Class Schedule

Counselor: FILIPPINI

PER	Course	Teacher	Signature
P0			
P1	Bridge to College English 12B	Meyer, Brooke L	
P2	Current World Affairs (CWA) B	Homburg, Robert J	
P3	Careers in ED/Teaching Academy 1B	Meyer, Brooke L	
P4	Algebra 2B	Skipper, Annsley	
P5	Physics B	Croskrey, Matthew D	
P6	Spanish - Year 2B	Osborne, Donelle L	
P7			
AET			
SVL			
Other			
RS			

2. BOOK RETURN :

Signature (by Margie Wordell, Book Rm)

3. HIGH SCHOOL AND BEYOND PLAN/RESUME:

Signature (by Ms. Charbonneau, Student Ofc)

4. LAPTOP RETURN : Including Power Adapter

Signature (by Christine Hanson, Library)

5. FEES: \$452.00 as of 5/9/2024

Signature (by Bookkeeper, Bus Ofc)

(Business Office will begin signing May 29th outside of class time for all Seniors)\*\*Additional fees may be added after May 29th\*\*

- Filippini will include and sign off...
- ICAN Classes Completed?
- Graduation Pathway Met?
- WSH Met?

CLEARANCE FORMS **MUST BE COMPLETED** FOR SENIORS TO GRADUATE. ALL FEES MUST BE CLEARED AND THIS FORM COMPLETED PRIOR TO RECEIVING A DIPLOMA. PLEASE TURN COMPLETED FORM TO YOUR COUNSELOR ON OR BEFORE WEDNESDAY, JUNE 5TH BY 3:00 PM IN ORDER TO PARTICIPATE IN GRADUATION.

- **STEP ONE:** Collect signatures from all teachers listed on the form. Each signature will indicate you will pass each class this semester. Teachers are instructed to NOT sign your form until you have met all requirements needed to earn credit for their course.
- **STEP TWO:** Visit Mrs. Charbonneau and have her sign off your High School and Beyond Plan (HSBP).
- **STEP THREE:** Return your laptop and power cord. If you are currently enrolled in CWA/AP GOV, you will return your laptops to the library as a class. If you are NOT enrolled in this class at Shadle, please return to the LIBRARY.
- **STEP FOUR:** Visit the Business Office to have your fees and fines assessed. Diplomas and transcripts will be held until these are cleared by the Business Office.
  - Please note the following two points of emphasis:
    - May 29th is the first date that the SPHS Business Office will begin signing Golden Tickets.
    - All student's current laptop (and charger) are included in the fee total listed on the golden ticket (Laptop is \$424.00 and charger is \$28.00). Providing student's turn these items in without damage this total (\$452.00) can be subtracted from the fee/fine total.
- **STEP FIVE:** Complete Senior Exit Info section at the bottom of this form.
- **STEP SIX:** Turn in your COMPLETED Golden Ticket to the SPHS Counseling Office on or before June 5.
- **RUNNING START, SVL, & NEWTECH STUDENTS:** Class completion and grades will be verified through Mrs. Filippini.

**SENIOR EXIT INFORMATION:**

Summer Contact Info:

\_\_\_\_\_(Email)/\_\_\_\_\_(Phone)

Where To Send Final Transcript:

\_\_\_\_\_

# Golden Ticket FAQs Answered

- ▶ Spokane Virtual Learning (online) classes: The SVL deadline is May 24<sup>th</sup> for all seniors planning to graduate on June 8<sup>th</sup>. SVL will send FILIPPINI a list of every senior who is cleared (will pass their course) and FILIPPINI will sign your Golden Ticket on behalf of SVL.
- ▶ Fines and Fees: The Business Office will start signing Golden Tickets May 29<sup>th</sup>. Check the fines/fees list posted outside the SPHS Counseling Center for current fines owed. Payment plans are available if needed.
- ▶ Laptops and Charge Cords are being collected June 5<sup>th</sup> in CWA/ AP Govt Classes. If you don't have a CWA/ AP Govt class at Shadle, return your laptops and charge cords to the SPHS Library.

# Golden Ticket FAQs Answered Cont.

- ▶ NewTech classes: June 5<sup>th</sup> NewTech will send FILIPPINI a list of every senior who is cleared (will pass their classes) and FILIPPINI will sign your Golden Ticket on behalf of NewTech.
- ▶ Running Start: Filippini will verify grades with SFCC/ SCC/ EWU and will sign your Golden Ticket. If you are currently taking a course Spring Quarter needed for your High School diploma, you will not receive your diploma on June 8<sup>th</sup>. Instead, you will need to pick up your diploma from SPHS after July 1<sup>st</sup> (once grades are finalized at the college).
- ▶ Completed Golden Tickets must be returned to the SPHS Counseling Center by June 5<sup>th</sup> to be eligible to participate in the Graduation Ceremony June 8<sup>th</sup>.

# Summer Transition Supports

Summer Melt Counselor

Ms. Aaliyah Ashley-Meek

- ▶ GEAR Up Support!
- ▶ College/University Orientations
- ▶ Helping with transitions
  
- ▶ Email:  
[aaliyaha@spokaneschools.org](mailto:aaliyaha@spokaneschools.org)
- ▶ Phone/Text: 509-850-0131

(Ms. Renner)

- ▶ Transcript Requests
- ▶ Help setting up orientation
- ▶ Help setting up placement testing
- ▶ Connecting students to academic advisors at the college
- ▶ Focus on SFCC/SCC/EWU



# College Success Foundation Summer Support

See Ms. Eddy in the SPHS Career Center  
for more information



College Services. Support for CSF Students |  
College Success Foundation

## Are you transitioning to college?

If you are the first in your family to attend college or are unsure of how you'll afford tuition, you can get **FREE one-on-one support** to start off on the right foot!

CSF College Success Coaches provide **FREE** personalized support to help you make the most of your college experience.

### Our coaches can help you:

- Navigate the newness of college
- Build a community & a sense of belonging
- Resolve unexpected financial emergencies
- Stay in-the-know about important college topics, deadlines, and opportunities
- Remain eligible to apply for CSF's Leadership 1000 Scholarship as a college student

SCAN TO  
ENROLL &  
MATCH WITH  
YOUR COACH



COLLEGE  
SUCCESS  
FOUNDATION

CHECK OUT OUR TEAM OF COACHES >>

# The Emotions of Graduation

- ▶ Excitement of summer, next chapter in life
- ▶ Fear and anxiety of unknown
- ▶ Stress of completing final graduation requirements
- ▶ Sadness of leaving Shadle, friends, family, etc.
- ▶ Frustrations when navigating new family roles and transitions
- ▶ Remember... WE ARE SHADLE PARK. WE are here to listen, problem solve, support, and walk with you through these last few weeks. You've got this!



# Am I failing a class?

- Connect with Mrs. Filippini or Ms. Charbonneau ASAP!
  - You need to PASS to Graduate!
  - SVL – Deadline Is MAY 24th





## FINES AND FEES

MUST be paid or have a payment plan to walk at graduation and receive diploma.

Posted outside of counseling center.

ALMOST TO THE FINISH  
LINE!!

Celebrate your pathway and  
empower the class of 2025 in the  
theater on May 23<sup>rd</sup> from 1:15p  
to 2:15p



## **Decision Day Ceremony**

Thursday, May 23<sup>rd</sup>  
1:15 pm-2:15 pm in the Theater

*Celebrate YOUR pathway*

Join Mrs. Eddy and Mrs. E from 5p-6:30p on May 23<sup>rd</sup> for the Tie Up Loose Ends Event in B104

- Get help with FAFSA and next steps after graduation.
- Resources for the next steps will be available!
- Parents are invited



Bring your questions and we'll bring answers!!!

CAP and GOWN  
Distribution

Both Lunches on  
Tuesday MAY 29<sup>th</sup>

If you do not pick it  
up on this day, you  
cannot get it until  
June 5<sup>th</sup>.



Senior FINALS

June 4<sup>th</sup> and June 5<sup>th</sup>

Laptops turned in  
June 5th







JUNE 6<sup>th</sup>

Senior Walks –

---

All seniors arrive  
at 8:00 AM to  
the theater

Wear/bring your  
CAP and GOWN!

ALL SENIORS  
must attend!

# Graduation Rehearsal – FRIDAY JUNE 7<sup>th</sup>

You must **ATTEND** and **RIDE THE BUS** to graduate.

Be at school by 8:00 AM

- you **MUST** ride the bus – no exceptions
- wear the shoes you intend to wear at graduation  
(NO Stiletto heels!)
- you will **NOT** have time to go home before the  
Move-Up con – so wear appropriate clothes for the  
day.

# Graduation Rehearsal – FRIDAY JUNE 7<sup>th</sup>

8:30 – load busses at Shadle

9:00 – 10:30 Rehearsal at the Podium

10:30 – 12:30 Walk to David's Pizza for the Senior  
Lunch and senior slideshow – DO NOT LEAVE  
THE GROUP! – you will not graduate.

12:45 – Load busses back to Shadle

1:30 – 2:30 – Move-Up Con

GRADUATION DAY!

Saturday June 8<sup>th</sup>

be at the podium NO  
LATER than 1:30PM

graduation starts at  
2:30 PM

No tickets needed for  
friends and family

No bags allowed/metal  
detectors



# Graduation Information

- **Guests:** There is NO LIMIT to the guests a student can bring and thus NO TICKETS NEEDED. Please plan to arrive an hour early to ensure you can find parking and get your seat.
- **Entrance/Security:** All parties attending will pass through security screening.
- **Clear Bag Policy & Prohibited Items:** The Podium has a clear bag policy meaning guests may carry one clear plastic or vinyl bag no larger than 14" x 14" x 6". Small clutch bags no larger than 4.5" x 6.5" are also permitted. Additionally, cow bells, megaphones, or other noise makers are also not permitted.
- **Photos of Graduates:** Dorian has partnered with Waldo, a platform that utilizes face recognition, for senior graduations. This partnership will have numerous benefits for families. [Please see the overview flyer for more information and instructions on how to register.](#)
- **Senior Website w/ FAQ:** [Seniors / Graduation \(spokaneschools.org\)](http://spokaneschools.org)



# Graduation Expectations

- **Attire**: Students are expected to dress professionally and wear attire appropriate for the ceremony. Costumes, props, etc. are not permitted.
- **Behavior**: Students are expected to behave in a manner that reflects the culture of graduation and does not detract from the moment for other graduates, families, or the community.

*Students whose attire or behavior detracts from the moment, including the celebration of both the individual and the class as a whole, will have their diploma held until an in-person meeting can be scheduled with the principal, superintendent, the student, and their family.*





# Cap Decorating

- Graduation is a day about **both** your entire graduating class and you as an individual graduate.
- Tribal and other cultural decorations under **RCW [28A.600.500](#)** are allowed.
- All other decorations ***must be approved by Mr. Dunn by Wednesday June 5<sup>th</sup>***. No caps will be approved after this date.
- Students wearing caps with unapproved decorations may be withheld from walking at graduation.





# Senior ALL Nighter

- **Where:** Triple Play in Hayden Idaho
- **Transportation:** It is required to ride the bus to and from Triple Play
- **Check-In:** At Shadle High School around 8:30pm on June 8th
- **Depart Shadle:** 9:30pm
- **Time at Triple Play:** 10:30pm to 4:30am
- **Depart Triple Play:** 4:30am on June 9th
- **Arrive Back at Shadle:** 5:30am
- **Cost to Attend:** \$30 (Assistance available if needed, please see Mrs. Filippini)
- \*\* To keep the cost down, please try to get a \$20 donation for our \$20 for '24 fundraiser\*\*



# Senior ALL Nighter

- Details:
- - Students will be able to do the majority of the attractions, bowling and Raptor Reef (swim park)
- - Clear bags will be given to each student attending, they are required to use this bag
- - Sharing the space with Ridgeline High School so each student will receive a shirt that we require you wear so we know who are from Shadle
- - Pizza, snacks and drinks will be provided - we also plan to have a coffee stand
- - Try to get a ride to the school but if you drive please park in Longfellow lot (security will be there all night)
- - Each student must sign a contract to attend
- - Prizes will be drawn at Triple Play but pick up will be at Shadle when you return
- - To register you will be able to do it online or we will be at the school on selected days for you to sign up (Online link and dates for at school registering will be released at the end of the week)



# Senior ALL Nighter

- \*\* To keep the cost down, please try to get a \$20 donation for our \$20 for '24 fundraiser\*\*

[filtered-27A3D477-5E6A-4A2E-A26A-D75C6EBEE5F0.mp4](#)



# \$20 FOR 2024

**APRIL 15-MAY 31**

Donate Any Amount at Any Time!

## PURPOSE

All donations will be put toward the Shadle Park 2024 Grad Night Celebration, as well as any funding requests from the Senior class to support Senior Breakfast, Prom, Senior Sunset, etc...

**We need your help! We need every Senior to reach out to parents, grandparents, aunts, uncles, family friends, etc...and ask if they can spare \$20 for the Shadle Park Class of 2024!**



## HOW PEOPLE CAN DONATE

### FLIPCAUSE

Scan the QR Code below to donate through FlipCause



### PAYPAL

Contact:  
[@shadleparkboosters.com](mailto:@shadleparkboosters.com)  
Please Specify 2024  
Grade Night

### VENMO

@ShadleParkBooster  
Club  
Please Specify:  
2024 Grad Night





Finish Strong Seniors!

